

LifeTecTM
Live your Potential

IMAGINE



SEEK



CHOOSE



LIVE



Smart Assistive Technology for
People with Dementia and their
Carers.

Craig Blackman & Scott Green



- Brisbane North
Aged Care Forum

- Thursday
17th June 2021





LifeTec

is a social enterprise that exists to enable people and their communities to achieve their goals through the correct application of assistive technology.

We provide everyone with everyday solutions to everyday activities.



History

The Independent Living Centre (ILC) was established in 1981 in Brisbane to help make people's lives easier, safer, more functional and independent with the support of assistive technology.

1981

2004

In 2004, Our founder Louise Van Willigen passed and left a dynamic and diverse organisation providing information and advice on assistive technology to thousands of Queenslanders across the state.

2006

In 2006, ILC rebranded to LifeTec focusing on growth and diversification of our services.

2008

In 2008, we opened a centre in Townsville, and more recently have started expanding our reach nationally to a variety of locations via partnerships, making our services more accessible to more people.

Established the National Equipment Database in affiliation with the ILC's

2010

2016

Started delivering NDIS services in Townsville trial sites



ASSISTIVE TECHNOLOGY...

A photograph of four people of different ages and ethnicities smiling. From left to right: a young woman with blonde hair, a middle-aged woman with grey hair, an older man with white hair, and a young man with dark hair. They are all looking towards the camera against a plain white background.

“Technology is EVERYTHING ... it is everything that can help us to live the life we want to live”

(Jacinta, 2016)

What makes technologies SMART



Sensitive

Mobile

Autonomous

Responsive

Technologies



What can SMART AT do for you?

- https://www.youtube.com/watch?v=8ajNau1TCS0&list=PLanzVGs6NBJ_aVJ0nuQ-iMmkkbCjGTlsN&index=2





HOME CONTROL & SECURITY



AUTOMATED APPLIANCES



SAFETY MONITORING



HEALTH MANAGEMENT



ACTIVITY ENABLEMENT



SOCIAL CONNECTION



HOME CONTROL & SECURITY



Door Locks

Door Bell

Camera

Air Conditioner

White Goods



Plug



Light



Television



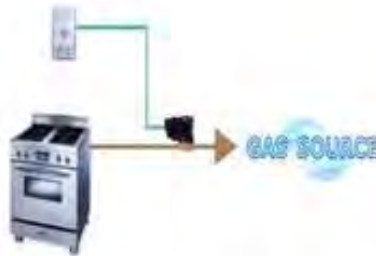
Cleaners/ Lawn Mowers



Overflow Devices



Overheat Shut Off



Stove Timed Shut off



Mixing Valves



SAFETY MONITORING



Emergency Call System



Fall Detector



Seizure Detector



Activity/Inactivity Monitoring



Environmental Monitoring



GPS Tracking



HEALTH MANAGEMENT



Medical Monitoring Devices/ Systems



Health and Wellness promotion

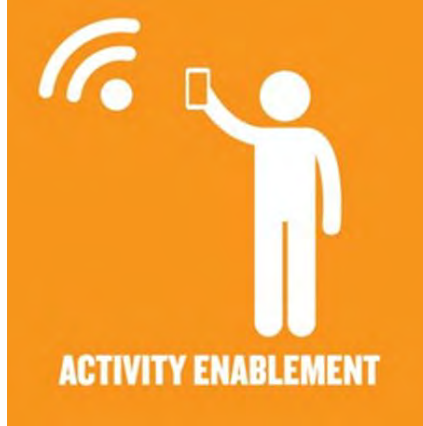


Medication Dispensers



Care Management Systems





Mobility/ Movement



Stress/ Pain Management



Navigation



Sense Augmentation



Schedules



Don't forget your keys

Prompts



Social Connection

Ann Louise –
Using Digital Noticeboard

https://www.youtube.com/watch?v=Xlqq9ZG2bJI&list=PLanzVGs6Nbj8fa-FVy_GyUUMQ6945kMP6&index=3



Benefits

Many can be purchased on open market



Many are passive and not require person with Dementia to remember how to use/operate

Advances in wireless connection have meant SAT have become more affordable



Considerations

AT may not work in the same way, or at all, for everyone with dementia.

Important to acknowledge that AT may not always be the solution. Modifying the task, routine or the environment may be beneficial.

AT can be used in conjunction with other strategies and can provide support to carers



Barriers/challenges

Fear and not understanding the technology (e.g accidental trigger of alarms)

Costs of the SAT

Perceptions of costs

Best time to use SAT and how to access

Lack of info & support from formal and health and social care services



Challenges for uptake of Smart AT

Some technologies are not co-designed with the needs and goals of people with Dementia and the care partners



Challenges for uptake of Smart AT

Lack of awareness of all the options

Lack of knowledge and support in using Smart AT

Technologies focused on safety and security and carer reassurance rather than lifestyle and engagement

Limited attention to aesthetics, many technological systems can feel stigmatising



AT ROLES AND RESPONSIBILITIES



CIRCLE OF SUPPORT



LIVE successfully with your AT

Potential Funding Sources for AT

- NDIS
- DSS-CHSP
 - Up to \$500 of funding per person per calendar year for aids and equipment. This cap can be increased to \$1000 with appropriate supporting evidence form an Occupational Therapist
- Queensland Health – MASS <https://www.health.qld.gov.au/mass>
 - Medical Aids Subsidy Scheme (MASS) – for AT inside the home.
 - Eligibility – CHSP, HCP – Lvl 1 and lvl 2
- My Aged Care
- Department of Veteran Affairs (DVA)- for eligible people
- Private Insurance and Compensation Schemes



Accessing Good Information

LifeTec Website: www.lifetec.org.au

National Equipment Database: <https://askned.com.au/>

Lifetec's YouTube Channel (featuring a range of videos and webinars): <https://www.youtube.com/user/LifeTecAT/videos>
(most of the webinars tend to be at the bottom of the Videos section on the LifeTec YouTube Channel if you scroll down).

Assistive Technology Fact Sheets: <https://lifetec.org.au/fact-sheets/>



Dementia and Smart AT

Information on LifeTec's Website

- Living well with Smart Technologies video series
- Living well with Smart Technologies eBook
- Smart Tech for people with Dementia online course – 7 modules
- <https://lifetec.org.au/dementia-and-smart-technology/#Living%20well%20with%20smart%20technology%20video%20series>



Seeking information

- Dementia Australia – Info on some technologies for people with dementia
- <https://www.dementia.org.au/>
- Alzheimer's Queensland
- <https://alzheimeronline.org/>
- Alzheimer's Western Australia help sheets:
<https://www.alzheimerswa.org.au/about-dementia/living-well-dementia/assistive-technology-help-sheets/>



Seeking information

- Dementia Enabling Environments Project DEEP
- <https://www.enablingenvironments.com.au/>
- Smart Home Database – Products and Reviews
- <https://www.smarthomedb.com/>
- Others:
- Allied Health Professionals
- Specialist AT Services
- Technology Suppliers
- Local Retailers



Where can professionals find out more?

- Community Care Smart Assistive Technology Collaborative
- www.satcommunity.com.au
- Australian Rehabilitation and Assistive Technology Association (ARATA)
- www.arata.org.au



AT for All

Advocacy work is occurring nationally in relation to equitable access to urgently needed AT and Home Mods solutions for people

ADA Australia: <https://adaaustralia.com.au/>

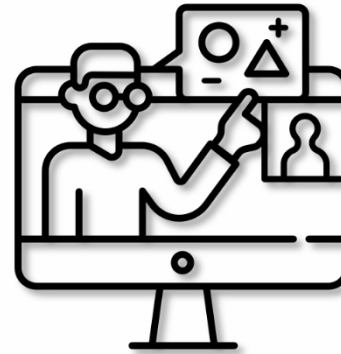
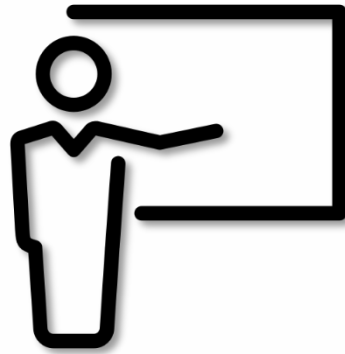
Assistive Technology for All: <https://assistivetechforall.org.au/>

Council on the Ageing (COTA) Queensland:
<https://www.cotaqld.org.au/>

AMPARO Advocacy Inc: <http://www.amparo.org.au/>



Learning & Professional Development



THE UNIVERSITY
OF QUEENSLAND
AUSTRALIA



**Southern Cross
University**

IMAGINE



SEEK



CHOOSE



LIVE



LifeTec™

TALK THROUGH THE OPTIONS



1300 885 886



mail@lifetec.org.au

www.lifetec.org.au

