

Strategic Plan 2020-2023

Vision:

**A community where
good health is available
for everyone**

Mission:

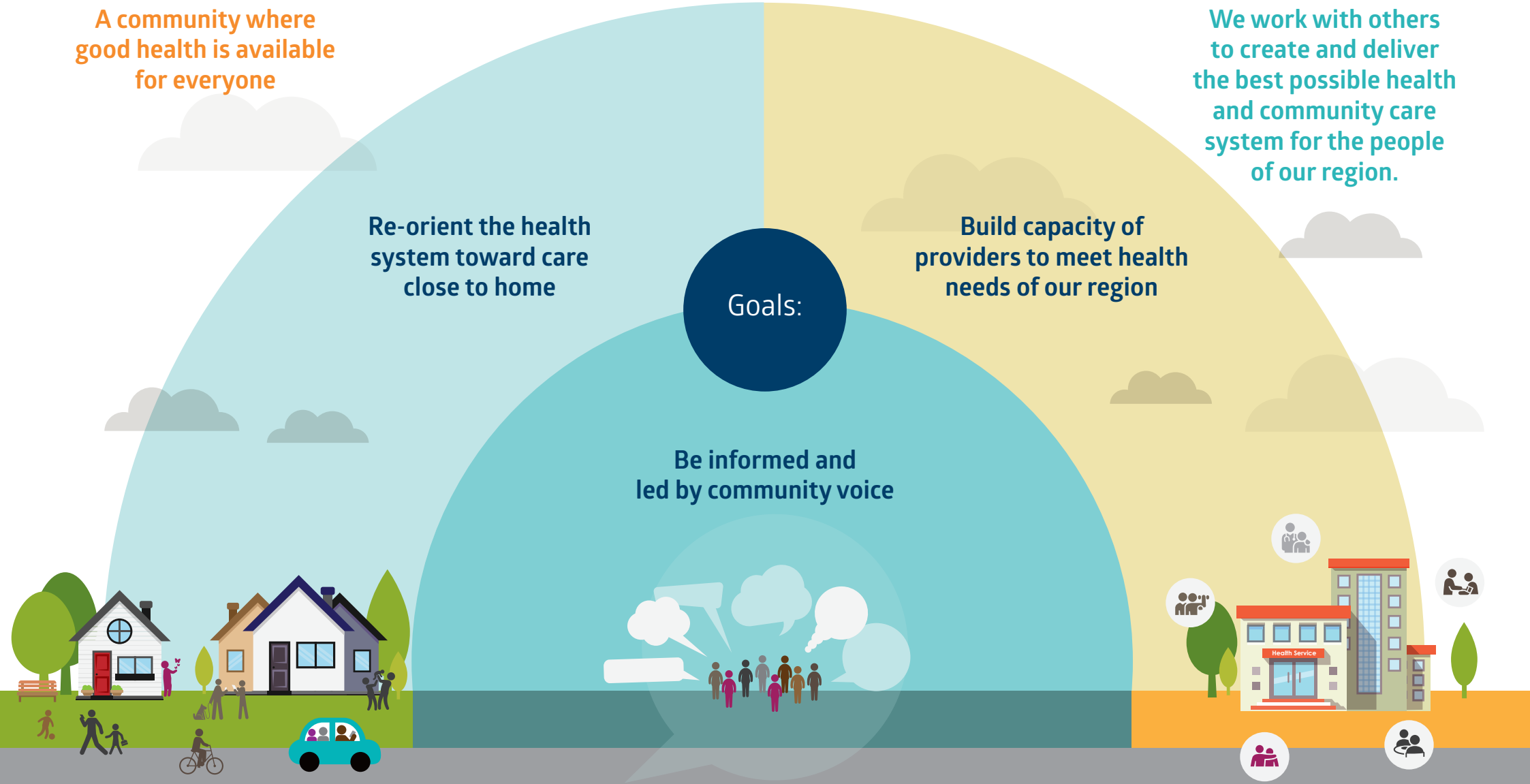
**We work with others
to create and deliver
the best possible health
and community care
system for the people
of our region.**

Goals:

**Re-orient the health
system toward care
close to home**

**Build capacity of
providers to meet health
needs of our region**

**Be informed and
led by community voice**



Our vision, mission, goals and values

Vision:

A community where good health is available for everyone

Mission:

We work with others to create and deliver the best possible health and community care system for the people of our region.

Goals:

Be informed and led by community voice

As an organisation, the PHN is dedicated to listening to our community and strengthening the voice of consumers and carers. We endeavour to build the capacity of people and communities to influence and lead system design. We particularly acknowledge our responsibility to ensure self-determination for First Nations peoples.

Re-orient the health system toward care close to home

Australians prefer to live healthy lives, in their own homes, as long as possible. Moving care closer to home requires a rebalanced investment into community based services including in-home care and greater power and knowledge in the hands of consumers to better manage their own care. Evidence shows that the best population health outcomes are achieved in systems with strong investment in primary healthcare. The PHN seeks to translate this evidence into practice.

Build capacity of providers to meet health needs of our region

In order for care to be provided closer to home, the capacity of community based services such as general practice, allied health, pharmacy and community aged care need to be enhanced. The PHN provides a range of complimentary services aimed at building quality and increasing integration of services. In addition, the PHN commissions a wide range of health services aimed at identified gaps in current health service delivery and promotes joint planning and collective impact approaches to align services toward common goals.

Values:

Collaboration

We build strong and enduring relationships to achieve our shared goals

Diversity

We are inclusive, fair and responsive to different needs

Integrity

We are transparent, respectful and work to the highest standards

Courage

We lead new approaches, learn and improve

Impact

We deliver outcomes for our community