

## Expressions of Interest - Carer Consultation For New Medicare Mental Health Centre in Chermshire

Activity Title:	Carer Consultation to improve mental health support and service design for the new Medicare Mental Health Centre in Chermshire
Dates:	<b>Thursday 7 May</b> (in person) 9.30 am-12.00 pm at Chermshire Library Meeting Room 3, 375 Hamilton Road, Chermshire, 4032 Or <b>Friday 8 May</b> (online) 5.00 pm-7.30 pm via Teams
Application closing date:	Tuesday 5 May 2026 ( <i>applications reviewed as received</i> )
Contact person:	Gillian Kehoul

## Expressions of Interest Invited

### Details of the Opportunity

Brisbane North PHN is seeking mental health carers to take part in consultation sessions to help shape the development of a new Medicare Mental Health Centre for people living with mental health needs in the Chermshire region.

This consultation focuses on the experiences of unpaid carers who have supported a person attending an Emergency Department (ED) for mental health treatment, and how services can better support individuals, carers, and families before, during and after ED presentations.

### What are the aims of the activity?

- to better understand carers' experiences when supporting someone before and after accessing ED mental health care
- to identify gaps, barriers, and opportunities in current service pathways
- to use carer insights to inform the design of a new Medicare Mental Health Centre in the Chermshire region.

### What lived and living experience perspectives are you seeking?

We are seeking perspectives from:

- carers, kin, family members or informal supporters of people who have attended ED for mental health treatment



- people who feel able to reflect on what worked well, what was challenging, and what would make a real difference in the development of future services.

## Are you seeking my personal experience or for me to speak on behalf of a broader community?

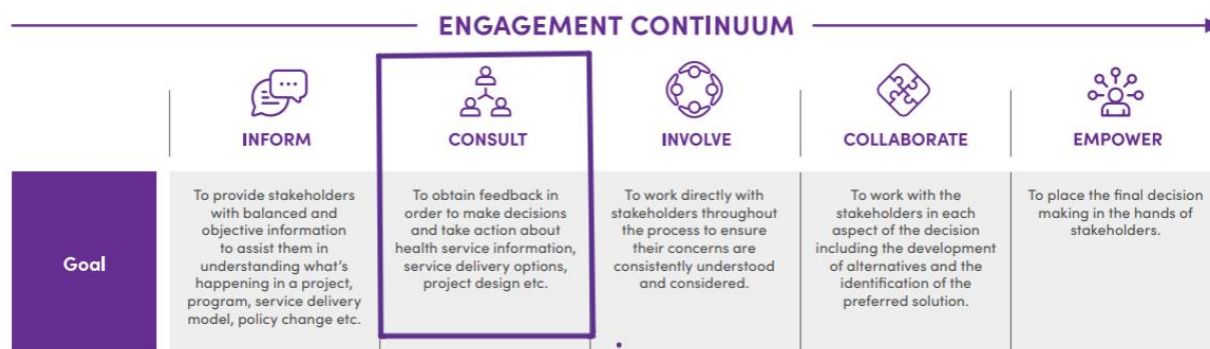
We are seeking your personal experience as a carer. You are not expected to represent others or advocate on behalf of a group.

## How will my perspectives be used?

Your feedback will be used to:

- inform service model design
- shape procurement and commissioning decisions
- improve how services work with carers and families.

Information will be summarized and de-identified.



**Figure 1: Brisbane North PHN's engagement continuum**

*(Lived experience representatives' participation in the project working group will be in the 'consult' part of the continuum).*

## How many positions are available?

Up to 20 carers across consultation sessions

## Will I be paid for my participation?

Yes. Participation is paid at \$60 per hour (GST exclusive) for 2.5 hours totalling \$150 (GST exclusive), in line with Brisbane North PHN lived and living experience payment policies.

## Are you seeking my personal experience or for me to speak on behalf of a broader community?

We are seeking your personal experience as a carer. You are not expected to represent others or advocate on behalf of a group.

## Details of the Opportunity

### Type of engagement:

One-off consultation session (choice of one session)

- **Session duration:** Approximately 2.5 hours
- **Preparation required:** None
- **Accessibility** needs can be accommodated – please let us know

### Session options:

- **Daytime in-person session**
  - Location: Chermside Library, Meeting Room 3  
Includes a break for morning tea (provided by Brisbane North PHN)

### Expected start:

- **In-person:** 9.30m -12.00 pm on Thursday May 7, 2026

OR

- **Evening online session**
  - **Teams meeting:** 5.00-7.30 pm on Friday May 8, 2026 - includes a break

### Support:

- Assistance with technology available for the online session

PHN staff and facilitators will attend the sessions to listen and learn; you are not expected to provide solutions, just share your experiences.

## Eligibility

You are eligible if you:

- are aged 18 years or over
- have supported someone who attended an Emergency Department in this area for mental health treatment
- live in, or support someone living in and/or accessing services in Chermside and surrounding regions in Brisbane's Northern suburbs.

*\*We encourage carers from a range of backgrounds and experiences to express interest.*

## How do I apply?

To express your interest in attending or enquire further about this opportunity please email: [gillian.kehoul@brisbanenorthphn.org.au](mailto:gillian.kehoul@brisbanenorthphn.org.au)

Please provide a few brief details in your EOI about your carer experience and how it relates to the criteria outlined and select your preferred session (in-person or online).

**Expressions of interest close: Wednesday 5 May.**

**Applications will be reviewed as received, and successful applicants will be contacted before each session to confirm attendance details.**