

Quality Improvement activity: Cancer Screening

Are you meeting your PIP QI requirements?

To meet the requirements of the Practice Incentive Program (PIP) for quality improvement (QI) practices must participate in continuous quality improvement activities. This tip sheet can help guide your practice team in establishing an area to focus on, namely, **Cancer Screening**. The Health Data team at Brisbane North PHN has created a **Cancer Screening Report** available via the [practice portal](#). The report provides an overview of your patient's participation in the three national cancer screening programs, Breast, Bowel and Cervical and can be used to identify patients who are potentially over-due. Please note: the report is available for a limited time only as part of the Cancer Screening Project.

Why focus on Cancer Screening?

Cancer is the leading cause of death in Australia.

There will be approximately 1 in 2 Australian men and women likely to be diagnosed with cancer by the age of 85 (Cancer Council Australia).

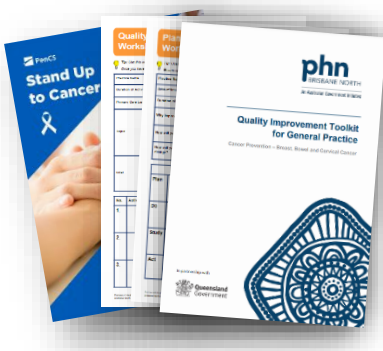
Cancer screening programs aim to reduce illness and death resulting from cancer through an organised approach to screening, however high rates of participation are needed to reap the greatest benefits to reduce illness and death (Australian Institute of Health and Welfare).

BreastScreen Australia: targets women aged 50–74 years for biennial mammograms.

National Cervical Screening Program: targets all women who have been sexually active from age 25 years, with screening occurring every five years.

National Bowel Cancer Screening Program: targeted at people aged 50–74 years with biennial screening.

What resources are available to assist with this activity?



Brisbane North PHN has developed Enhanced Quality in Practice (EQiP), a stepped approach to supporting quality improvement in general practice. The following resources have been created to assist your practice team in undertaking Cancer Screening quality improvement activities:

- Quality Improvement Toolkit for Cancer Screening
- EQiP Quality Improvement Worksheet
- EQiP Plan Do Study Act Worksheet
- EQiP Quality Improvement Yearly Planner
- Pen CS Stand up to Cancer Guide (Supports with CAT4 searches)

For further information, support or to request PDF versions of the resources, please contact your Primary Care Liaison Officer (PCLO) on 07 3630 7300.

www.brisbanenorthphn.org.au

Level 1, Market Central
120 Chalk Street, Lutwyche QLD 4030
PO Box 845 Lutwyche QLD 4030
t 07 3630 7300 f 07 3630 7333

Level 2, 10 Endeavour Boulevard
North Lakes QLD 4509
PO Box 929 North Lakes QLD 4509
t 07 3490 3490 f 07 3630 7333