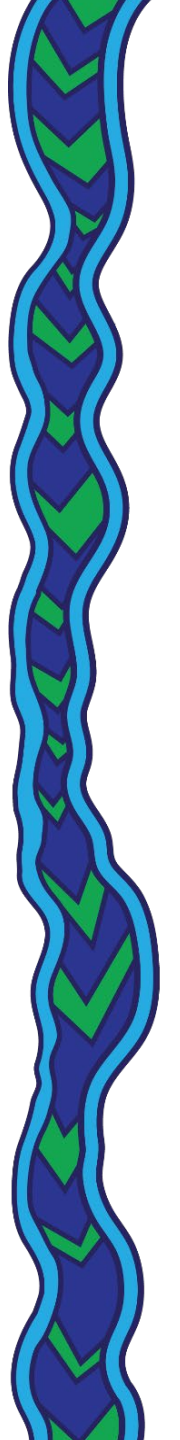
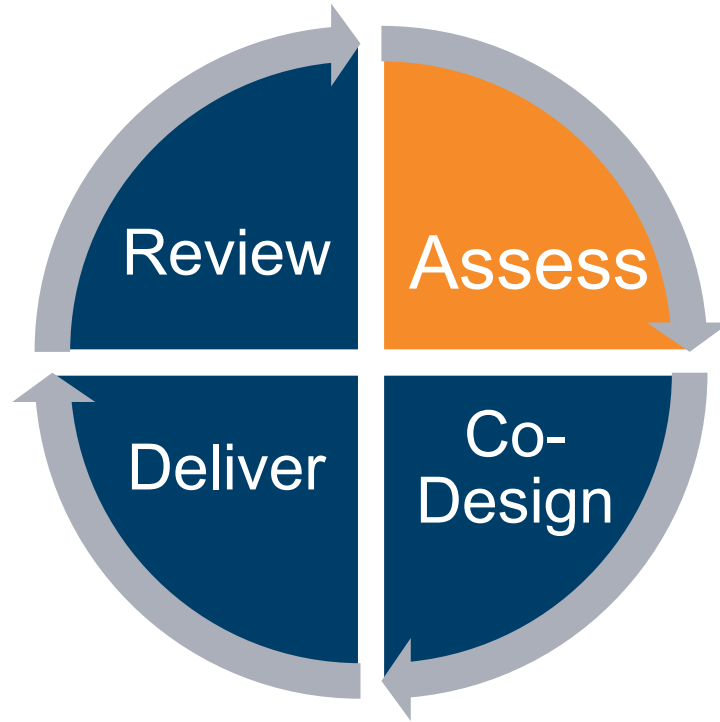


Health Needs of Older Persons in North Brisbane and Moreton Bay

24 March 2022

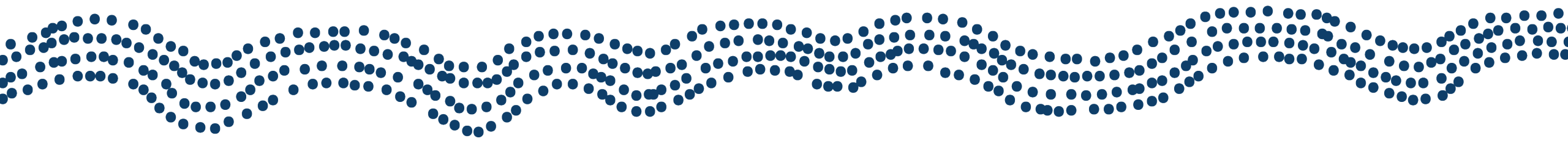


Health Needs Assessment



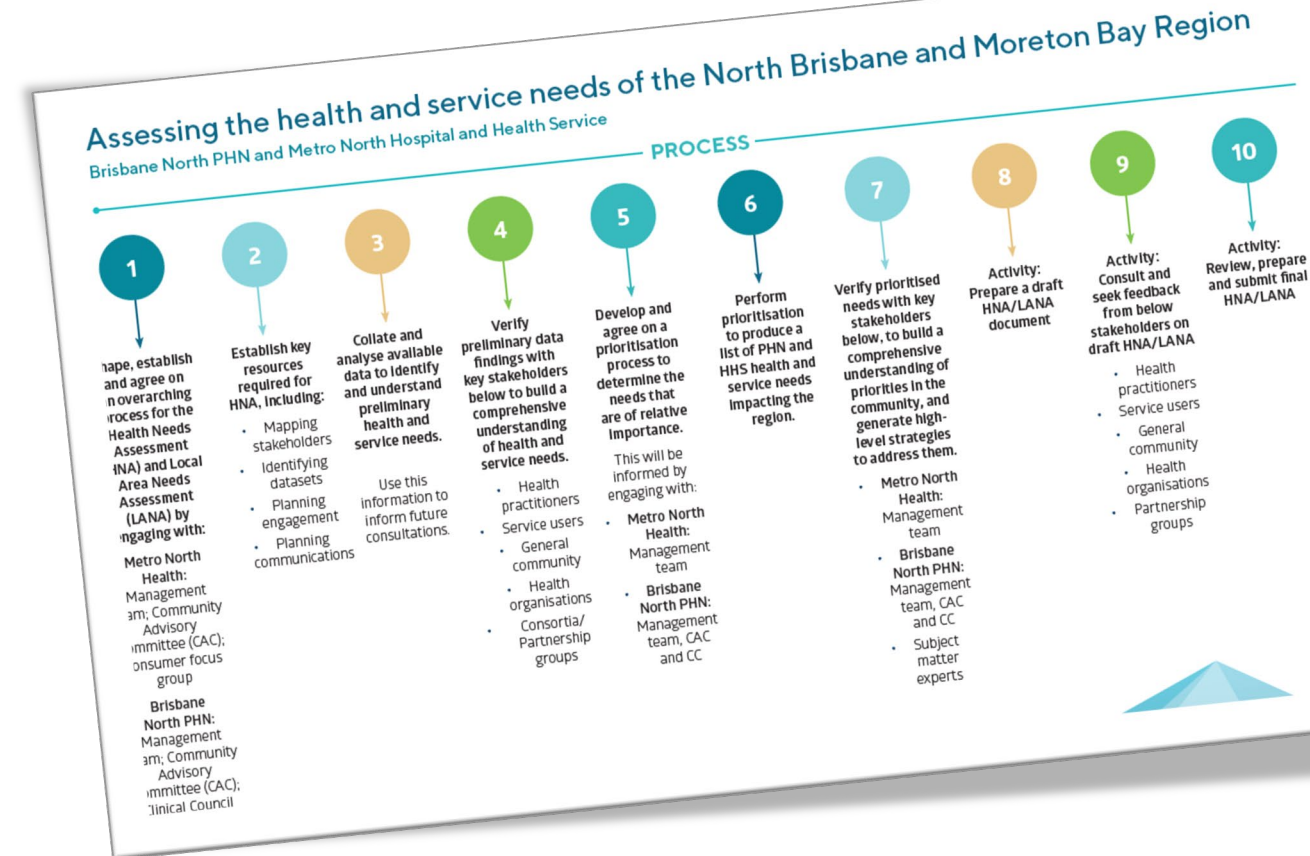
Commissioning Cycle

- It informs the PHN's understanding of the North Brisbane and Moreton Bay North community
- The HNA provides the basis for planning and commissioning of services.
- Looks at identifying regional population's health needs, the local health care services, undertaking stakeholder and community consultation.



Health Needs Assessment – The Process

- Partnership with Metro North Health
- Agreed 10 step process – 4 main components:
 - Planning, data collection and analysis, prioritisation and document preparation.
- Consultation: community, general practitioners, health practitioners, partnership groups and health agencies/organisations.
- Data: geography, social determinants, health behaviours, health status, service access and availability, service utilisation.



Brisbane North PHN Health and Service Need Priorities – 2022/23 to 2025/26

Aboriginal & Torres Strait Islander Health

- Equity in care
- Gap in health outcomes

Alcohol & Other Drugs

- Dual diagnosis
- Addressing vulnerable groups
- Stigma & discrimination
- Support for families & carers

Children's Health

- Supporting mental health of infants, children & young people
- Developmental vulnerability
- First 1000 days

Mental Health

- Severe & complex mental illness
- Anxiety & depression
- Addressing vulnerable groups
- Support for families & carers
- Suicide prevention
- Crisis support
- Psychosocial support
- Stigma & discrimination
- Lived experience leadership
- Physical health of people with mental illness

Older People

- Managing chronic disease in older people
- Frailty
- Dementia
- Specialist & geriatric services
- Support for families & carers
- Stigma & discrimination
- Social isolation
- Supporting mental health of older people

Population Health

- Geographic areas of need
- Social determinants
- Lifestyle risk factors
- Health screening
- Potentially preventable hospitalisations
- Vaccinations
- Patient activation & empowerment
- Genomics

Service System

- Primary care quality improvement
- Service capacity
- Workforce capability
- Service access
- Care coordination
- Systems integration
- Support to navigate the service system
- Chronic pain
- Palliative care
- Support for people with chronic and complex conditions
- Health literacy
- Workforce distribution
- Tele/digital health

Predominant focus on the More Bay North

Statistical Area (Level 3): Caboolture, Caboolture Hinterland, Bribie Island – Beauden, Brangba-Burpengary

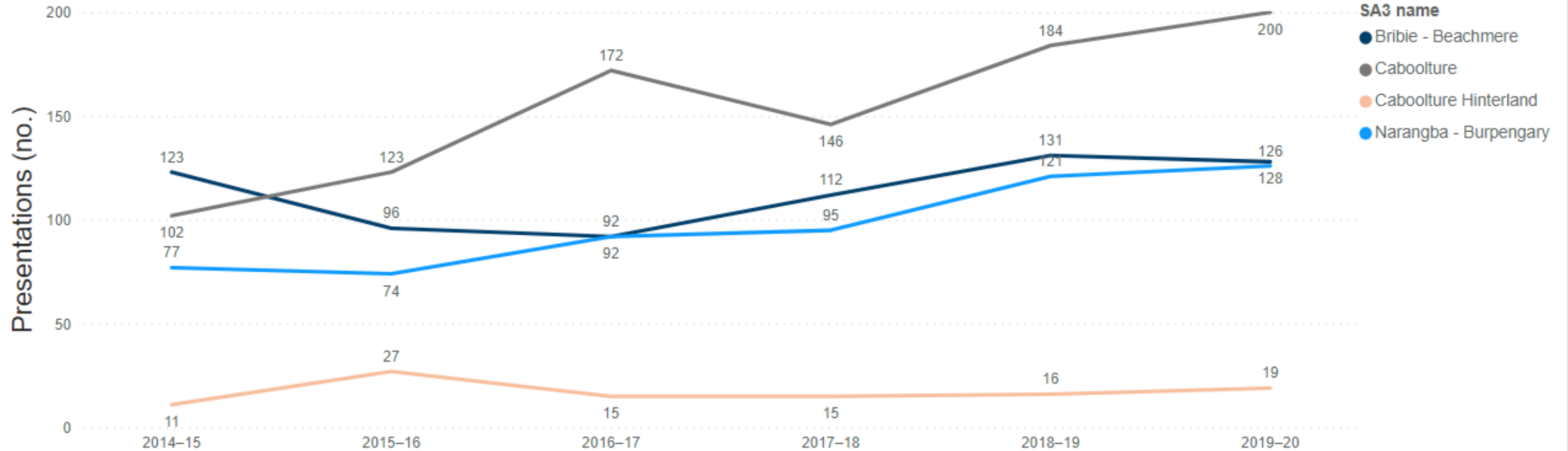
In total, 63 health and service needs identified

- Prioritisation process excluded 3
- Needs common across areas further consolidated – yielding 48 needs



Mental Health in Older Persons

Mental-health related ED Presentations, 65+ years



- Among all age groups, people aged 65+ years accounted for 17% of total mental-health related ED presentations in Moreton Bay North (2019-20).

- 65+ years in MBN: average annual increase of 8.5%
- All ages in MBN: average annual increase of 2.2%

Emergency Department Presentations & Potentially Preventable Hospitalisations

ED Presentations (2018-19)	Rate per 100,000 people		
	Total, 65-74 years	Males, 65-74 years	Females, 65-74 years
Bribie Island – Beachmere	30,171	32,876	27,622
Caboolture	48,917	52,360	45,685
Caboolture Hinterland	24,077	25,037.0	23,028
Narangba - Burpengary	36,063	38,470	33,815
PHN	28,739.9	30,908.1	26,734.3

24,838 Total ED Presentations in PHN
MBN = 31.7% (n=7,892)

Primary diagnoses: Injury/poisoning/other (19.2%), Circulatory (20%).

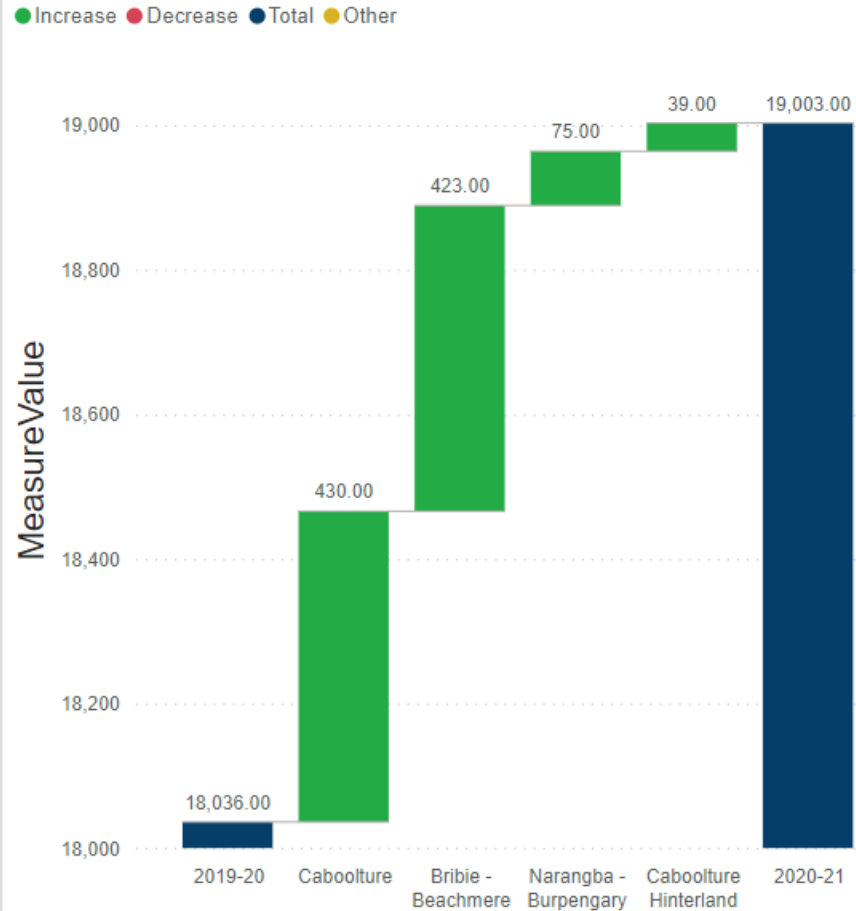
Admissions PPH (2018-19)	Rate per 100,000 people
Bribie Island – Beachmere	6,835
Caboolture	11.191
Caboolture Hinterland	8,815
Narangba - Burpengary	9,425
PHN	6,544.2

9,685 Total PPH in PHN
MBN = 31.5% (n=3,050)

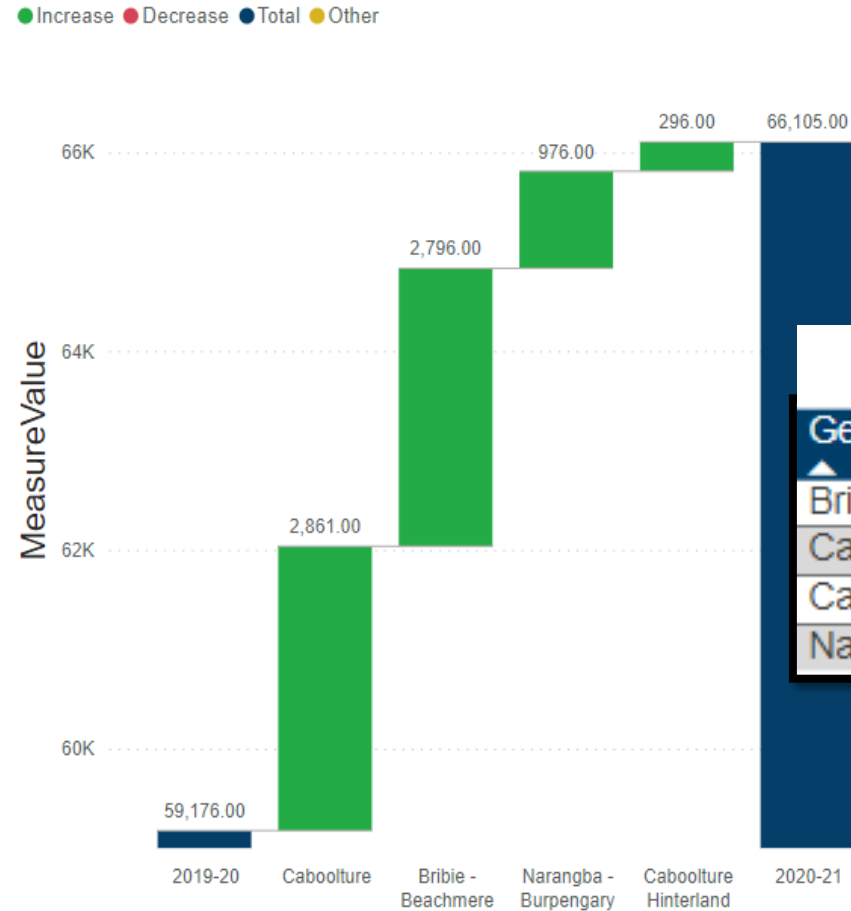
Conditions: Pneumonia and influenza, cellulitis, urinary tract infections (including pyelonephritis), and COPD

Specialist & Geriatric Services

MBS Services: No. of Patients, 65+ years



MBS Services: No. of Services, 65+ years



Services per 100 people

GeographicAreaName	2019-20	2020-21
Bribie - Beachmere	155.22	167.84
Caboolture	183.00	204.40
Caboolture Hinterland	126.53	130.70
Narangba - Burpengary	166.03	168.04

Coordination & Navigation

2,452

Total Admissions into RACF

2,365

Total Discharges from RACF

Discharge Reason	Discharge Reason %	Avg. LOS (mths)
Death	45%	30.3
Other	18%	1.8
Return to community	27%	1.7
To hospital	4%	3.9
Other RACF	5%	11.1

1,272

Total Admissions into Home Care

657

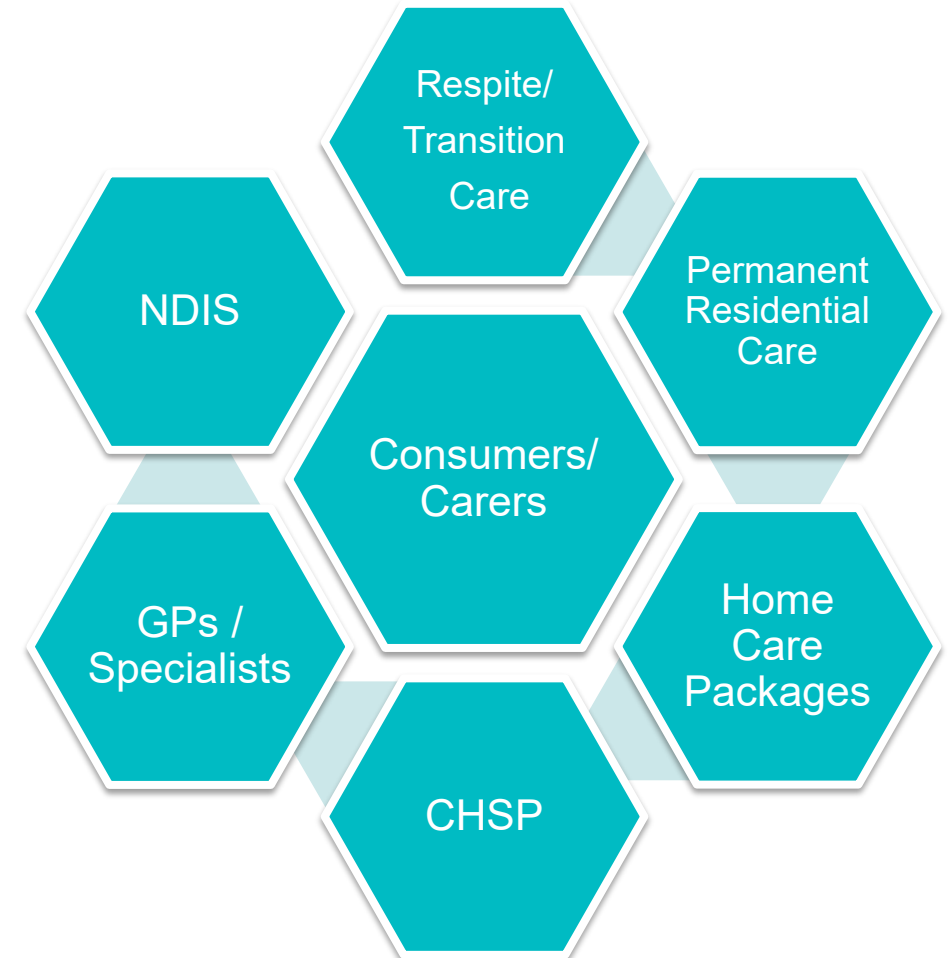
Total Discharges from Home Care

Discharge Reason	Discharge Reason %	Avg. LOS (mths)
Death	36%	22.3
Other	8%	11.8
To hospital	53%	21.8
Other RACF	2%	31.4

Lvl 1	Lvl 2	Lvl 3	Lvl 4
39%	45%	15%	8%

?

Transition Care in Cabool ACPR?



Consultation

- **Community-based** support or services
- More efficient processes for **assessments** and in **allocation** or negotiation of provided services
- Availability/ease of access to information to assist in service navigation – opportunity for **peer support**
- **Integration** of services across providers
- Greater presence/availability of **geriatricians** in the community
- Workforce to support the sector

